

## How can YOU help?

*We still have a lot to learn about why people develop glomerular disease and what the best medicines are to treat these diseases. This network brings a large group of patient information and laboratory specimens together to speed up and improve health research.*

*If your doctor determines you are eligible to enroll in this study, please contact the study center nearest you and enroll today!*

**Want to learn more?**



For more information on CureGN, please visit our website at [CureGN.org](http://CureGN.org)



The CureGN study is funded by the National Institute of Diabetes and Digestive and Kidney Diseases (NIDDK) at the National Institutes for Health (NIH), as well as NephCure Kidney International (NKI).



*Cure  
Glomerulonephropathy  
Network*



[www.CureGN.org](http://www.CureGN.org)



Columbia University IRB

IRB-AAAN8811

IRB Approval Date: 02/02/2015  
for use until: 10/28/2015

## What is CureGN?

**Cure Glomerulonephropathy Network (CureGN)** is a multi-year study of 2,400 children and adults with four rare glomerular (kidney) diseases at over 50 centers in the US, Canada, and Italy. The purpose of CureGN is to create a patient research network to learn about four major causes of glomerular disease :

- **Minimal Change Disease (MCD)**
- **Focal Segmental Glomerulosclerosis (FSGS)**
- **Membranous Nephropathy (MN)**
- **IgA Nephropathy (IgAN)**

This study will be following participants over an extended period of time to better understand

- the causes of disease
- response to therapy and
- causes of disease progression in patients

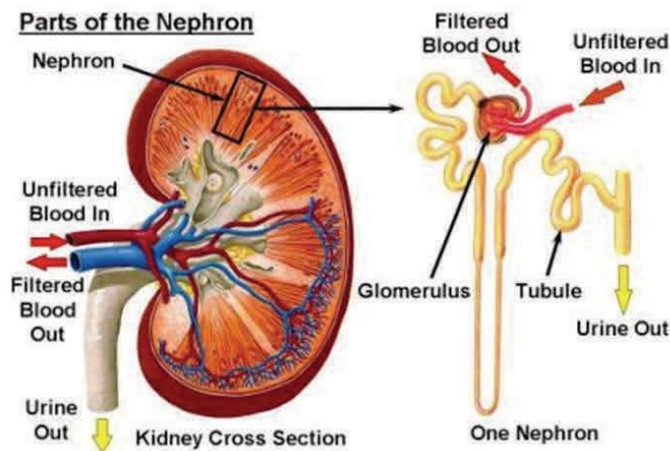
Ultimately the goal is for this knowledge to lead to cures for these kidney diseases.

## CureGN and You

Your kidneys are about the size of your fist and are located on either side of the spine below the lowest level of your rib cage. They are made up of tiny filters called the “glomeruli.”

The glomeruli keep cells and protein in your blood while filtering out waste products, salts, and leftover fluid through urine. When these glomeruli are damaged, over time your kidneys can become scarred and do not work as well.

By enrolling in this study, you will be helping CureGN learn about glomerular diseases and apply research findings to help patients like you receive better care and outcomes.



Glomeruli filter your blood by removing waste products

## Requirements to Be In the Study



This study accepts people of all ages diagnosed with **MCD, FSGS, MN, or IgAN** on their first kidney biopsy.

- First kidney biopsy within 5 years study enrollment
- You must be willing to donate blood and urine samples and to participate in follow-up visits.
- You will need to consent to be in the study.

